



## Bud Pop

Los Angeles, CA  
info@budpop.com

## Sample 292-092021-092

25mg Broad Spectrum Orange+Tumeric

Batch/Lot # 210823HSBOT

Sample Submitted: 09-20-2021; Report Date: 09-22-2021

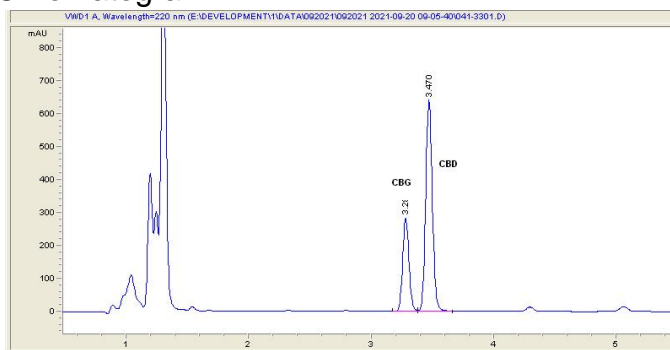
nullSample Unit Size: 4.80 g

## 25mg Broad Spectrum Orange+Tumeric

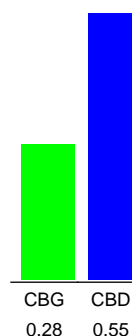
Edible: Candy

## Batch/Lot # 210823HSBOT

### Chromatogram



### Cannabinoid Profile



### Cannabinoid Profile by HPLC

**0.00%**  
Calculated THC Yield

**0.55%**  
Calculated CBD Yield

**0.83%**  
Total Cannabinoids

Cannabinoid	% wt	mg/unit
CBG	0.28	13.44
CBD	0.55	26.4
<b>Total Cannabinoids</b>	<b>0.83</b>	<b>39.8</b>
<b>Calculated THC Yield</b>	<b>0.00</b>	<b>0.00</b>
<b>Calculated CBD Yield</b>	<b>0.55</b>	<b>26.40</b>

Calculated Maximum THC Yield = THC + 0.877 \* THCA  
Calculated Maximum CBD Yield = CBD + 0.877 \* CBDA

### Marin Analytics, LLC

250 Bel Marin Keys Blvd, Suite D4  
Novato, CA 94949

415-936-6477 / sarabiancalana1@gmail.com

**Sara Biancalana**  
Chief Scientist

This sample has been tested by Marin Analytics, LLC using valid testing methodologies and a quality system. Values reported relate only to the sample tested. Marin Analytics, LLC makes no claims as to the efficacy, safety or other risks associated with any detected or non-detected levels of any compounds reported herein. This Certificate shall not be reproduced except in full, without the written approval of Marin Analytics, LLC.